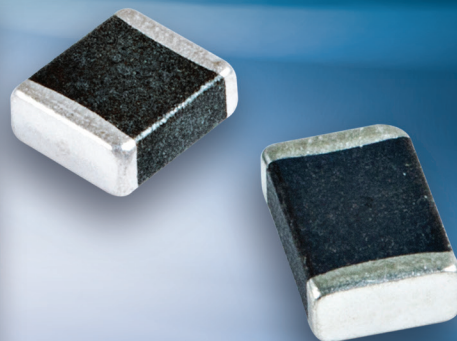


High Voltage and Current Surge Withstanding Capability



AEM's innovative nano-technology, ceramic-based, high energy surge protection devices come in a compact footprint for applications where board space is limited. The HSP product line is capable of clamping high voltage and current surges to safe levels thus protecting sensitive components.

HSP Features:

- Operating voltage (up to 300VAC/385VDC)
- Compact footprint
- High voltage and current surge withstanding capability
- Low clamping Voltage
- Fast response time
- Low leakage current
- Bidirectional

HSP Applications:

- LED Lighting
- Automotive
- Industrial Equipment
- Power Supplies
- Base Stations

Series	Sizes	Application	Standard	Energy Level
SA	1206, 1210, 1812, 2220, 3220	Automotive	AEC-Q200	Load Dump: 1.5 - 50 J (10 times)
SC	1206, 1210, 1812, 2220	Industrial Control	IEC61000-4-5	Surge Current: 3000A (8/20 μ s)
SV	1210, 1812, 2220, 3220	Lighting & Power Supplies	IEC61000-4-5	Breakdown Voltage: 470V / Surge: 800A

For complete product data, go to www.aemcomponents.com/catalog/AEM_MLV_HA.pdf